

# MIXED FLOW DRYER



# AGI NECO Mixed Flow Dryer

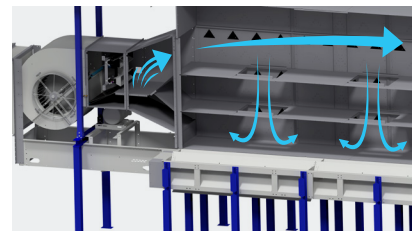
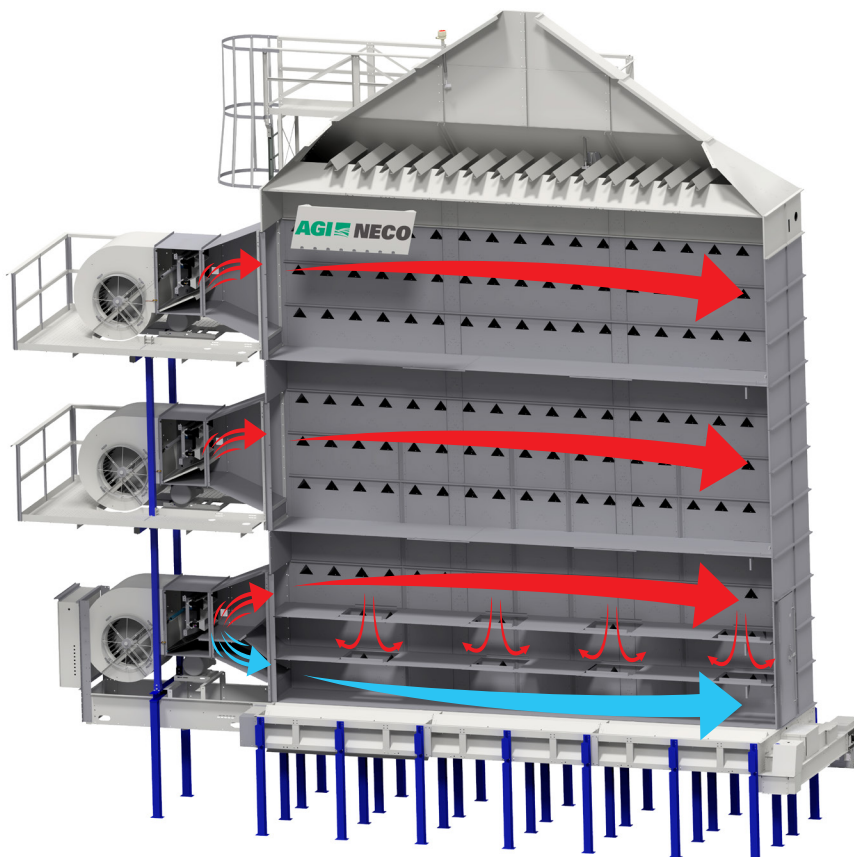
One of the most efficient dryers on the market.

For over 50 years, AGI NECO has specialized in agricultural equipment engineering and manufacturing. We produce market-leading grain dryers for on-farm and commercial applications worldwide. Each dryer section is factory tested and thoroughly inspected before shipping. We also provide hands-on technical dryer service training and experienced technical support to ensure that you get the most out of your AGI NECO dryer. The AGI NECO Mixed Flow Dryer is one of the most efficient dryers on the market that maximizes dried grain's test weight while lowering your energy bill.

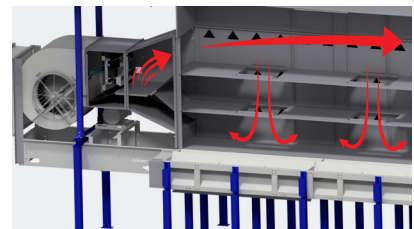
The Mixed Flow Dryer quietly and efficiently heats kernels evenly to avoid heat damage and effectively dry all grain types. The systems' screenless operation and computerized moisture control deliver consistently higher quality grain and heavier test weights per bushel, translating into maximum value for customers.

## Flexible Operation Capability

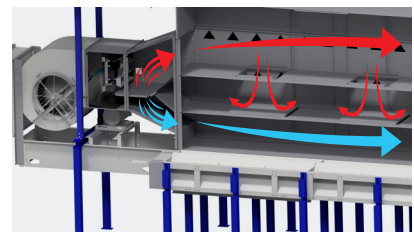
- Allows dryer to run in full heat or heat and cool modes on single burner dryers
- For multiple burner dryers:
  - Individual temperature settings for each burner adds unrivaled flexibility
  - Multiple options for drying include full heat, heat and cool, steeping or sweating



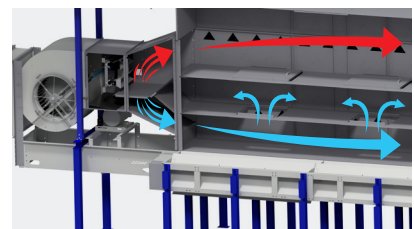
All cool



All heat



Cooling one tier

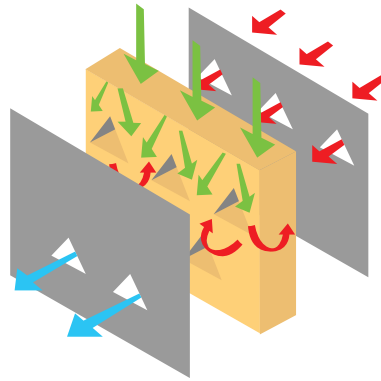


Cooling two tiers

## DRYER FEATURES

### Mixed Flow Drying Process

- Maintains the highest grain quality
- Allows for easy air and grain mixing throughout the drying process
- Consistent kernel to kernel moisture across the grain column
- Long retention time allows the grain to dry slowly, resulting in significantly higher test weights and higher quality product
- Quiet centrifugal fans



- Grain flow
- Hot air drying
- Moist exhaust air



AGI NECO dryers work with all grain types, are energy efficient and a great low-cost drying option. AGI offers total grain storage solutions through a diverse catalog of grain handling and storage equipment to complement AGI NECO dryers.

## DRYER FEATURES



Blower VFD for single-phase applications available



### Additional Key Features

- No screens to clean or get plugged, maintaining airflow throughout drying season
- Maintains efficiency without regular cleaning
- Suitable for all crops from corn to canola, with no risk of plugging screens
- Up to 30% more fuel efficient than conventional screen dryers
- Heavy gauge G-90 galvanized material for longevity
- Drag conveyors are optional for some models, standard on large capacity dryers

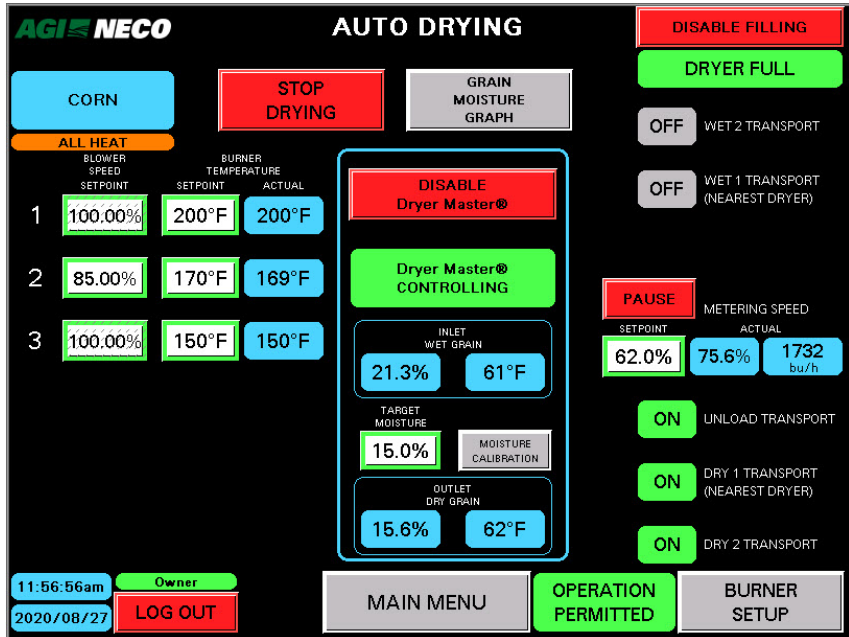
### Stainless Steel Fuel Trains

- Unique to AGI NECO dryers
- No corrosion to fuel train to affect performance
- No rust on inside of components that could compromise fuel train performance

# Commander

## Commander Control

- PLC based dryer control system developed by AGI NECO
- Easy-to-use touch screen navigation with clear graphics
- Tracking and graphing capabilities to show drying progress
- Alarm and troubleshooting assistant
  - Self-diagnostic capabilities for quick troubleshooting
  - Quick visual reference of alarm history
  - Helps minimize repair time



## Dryer Master®

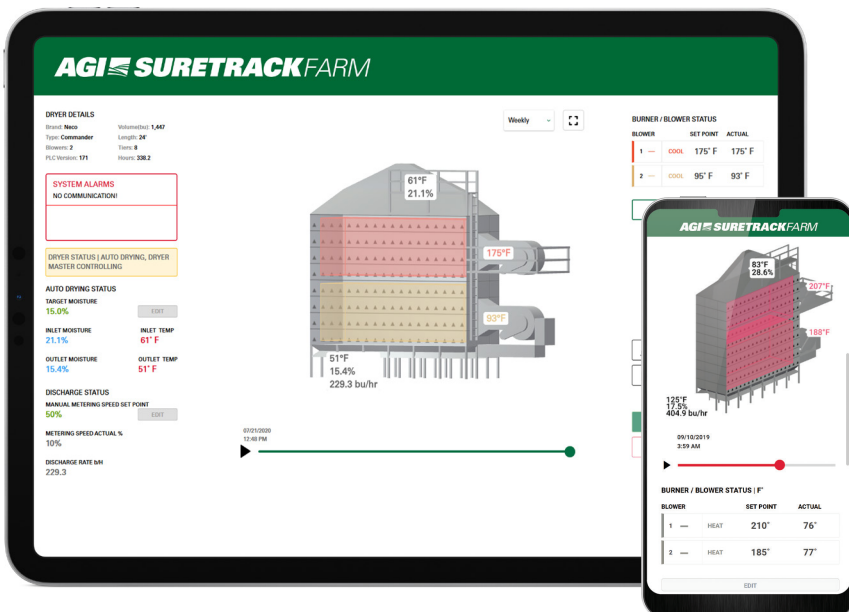
Equipped with Dryer Master® moisture control

- Dryer Master® embedded in software for moisture control
- Dual moisture sensors provided



## AGI SureTrack Dryer Manager™

- Monitoring moisture and temperature within dryer from any device
  - Tablet, smart phone, laptop
  - Ability to connect via cellular or internet data
- Receive alarms and callouts via text, or e-mail
- Manage your dryer operation remotely
- Access to the AGI SureTrack™ dryer manager



**IMPERIAL MEASUREMENTS**

DRYER MODEL	NUMBER OF TIERS	HOLDING CAPACITY (BU)	CORN					WHEAT		CANOLA	RICE	NUMBER OF BLOWERS AND HP	AMPS 230V 3 PHASE	AVERAGE BURNER OUTPUT MMBTU/HR	MAX BURNER OUTPUT MMBTU/HR	MAX UNLOAD CAPACITY (BPH)	FILL HEIGHT GRAVITY FILL (FT)	TOTAL LENGTH (FT)
			ALL HEAT 210°F (22%-17%)	DRY & COOL 210°F (20% - 15%)	ALL HEAT 210°F (25% - 17%)	ALL HEAT 210°F (27% - 17%)	DRY & COOL 210°F (25%-15%)	ALL HEAT 210°F 5 PTS	DRY & COOL 170°F 5 PTS	ALL HEAT 15% - 10%	ALL HEAT 4 PTS							
<b>16' DRYERS</b>																		
D1670	5	674	631	463	417	336	298	621	446	297	591	1 x 20 HP	95	4.0	6.0	982	21.2	24
D1680	6	770	740	589	488	393	361	714	561	348	692	1 x 20 HP	95	4.5	6.0	982	23.2	24
D1690	7	866	860	720	567	457	372	833	691	404	804	1 x 25 HP	115	5.25	6.0	982	25.2	24
D16106	8	962	981	851	648	522	443	1003	863	461	918	2 x 15 HP	135	6.0	12.0	1527	27.2	27
D16120	10	1155	1250	1037	826	667	596	1240	1017	588	1169	2 x 20 HP	160	7.75	12.0	1527	31.2	27
D16140	12	1347	1468	1277	969	782	721	1426	1233	689	1373	2 x 20 HP	160	9.25	12.0	1527	35.2	27
D16160	14	1539	1732	1458	1145	924	815	1740	1454	813	1620	1 x 15 HP 2 x 20 HP	200	11.0	18.0	2250	39.2	27
<b>24' DRYERS</b>																		
D24108	6	1155	1109	883	731	589	541	1084	851	521	1037	2 x 15 HP	135	7.0	12.0	1473	25.9	35
D24150	8	1443	1474	1279	973	784	665	1427	1230	693	1379	2 x 20 HP	160	9.25	12.0	1473	27.9	35
D24180	10	1732	1687	1398	1108	891	797	1667	1369	793	1578	2 x 25 HP	200	10.5	15.0	2291	33.9	35
D24210	12	2020	2201	1916	1454	1173	1082	2139	1850	1034	2059	3 x 20 HP	220	13.75	18.0	2291	37.9	35
D24240	14	2309	2428	2061	1595	1284	1142	2380	2002	1141	2271	1 x 20 HP 2 x 25 HP	260	15.0	21.0	3382	41.9	35
D24260	16	2597	2928	2553	1934	1560	1415	2851	2470	1376	2739	4 x 20 HP	280	18.5	24.0	3382	45.9	35
D24330	20	3174	3357	2931	2206	1775	1668	3382	2893	1717	3140	5 x 20 HP	340	20.75	30.0	6000	53.9	35
D24380	24	3750	4098	3594	2693	2167	2013	4045	3524	2058	3833	6 x 20 HP	395	25.25	36.0	6000	61.9	35
<b>32' DRYERS</b>																		
D32260	12	2693	2647	2499	1908	1399	1275	2542	2202	1359	2305	3 x 30 HP	320	18.0	22.5	6000	40.6	43
D32340	16	3463	3521	3129	2538	1862	1565	3389	2941	1807	3179	4 x 30 HP	400	24.0	30.0	6000	48.6	43
D32440	20	4232	4394	4071	3168	2324	2061	4235	3679	2258	4052	5 x 30 HP	510	30.25	37.5	6000	56.6	43
D32500	24	5001	5268	4993	3798	2786	2550	5062	4418	2704	4829	6 x 30 HP	590	36.25	45.0	6000	64.6	43

**Product Disclaimer:**

- Drying capacities represent NECO's best estimate of attainable wet bushel capacities based on a combination of actual field results and computer analysis
- Capacities will vary depending on outside temperature, humidity, initial grain temperature, crop maturity and variety, cleanliness of the grain, test weight, operating temperature, drying vs. cooling zones, etc
- Hot grain discharged from the dryer will dry an additional 1.5% - 2% when properly cooled
- Fill height listed is for a dryer with a 48" standard leg kit
- Average burner output MMBTU/hr is based on 155°F temperature rise. Ambient of 55°F and dryer operating temperature of 210°F

**METRIC MEASUREMENTS**

DRYER MODEL	NUMBER OF TIERS	HOLDING CAPACITY (MT)	CORN					WHEAT		CANOLA	RICE	NUMBER OF BLOWERS AND HP	AMPS 380V 3 PHASE	AVERAGE BURNER OUTPUT MMBTU/HR	MAX BURNER OUTPUT MMBTU/HR	MAX UNLOAD CAPACITY BPH (MT)	FILL HEIGHT GRAVITY FILL (M)	TOTAL LENGTH (M)
			ALL HEAT 98.8°C (22%-17%)	DRY & COOL 98.8°C (20% - 15%)	ALL HEAT 98.8°C (25% - 17%)	ALL HEAT 98.8°C (27% - 17%)	DRY & COOL 98.8°C (25%-15%)	ALL HEAT 98.8°C 5 PTS	DRY & COOL 98.8°C 5 PTS	ALL HEAT 15% - 10%	ALL HEAT 4 PTS							
<b>16' DRYERS</b>																		
D1670	5	17.1	16.0	11.8	10.6	8.5	7.6	16.9	12.1	6.7	12.1	1 x 20 HP	60	4.0	6.0	25.0	6.4	7.3
D1680	6	19.6	18.8	16.0	12.4	10.0	9.2	19.4	15.3	7.9	14.1	1 x 20 HP	60	4.5	6.0	25.0	7.0	7.3
D1690	7	22.0	21.9	18.3	14.4	11.6	9.5	20.0	18.8	9.2	16.4	1 x 25 HP	75	5.25	6.0	25.0	7.6	7.3
D16106	8	24.4	24.9	21.6	16.5	13.3	11.3	32.7	23.5	10.5	18.7	2 x 15 HP	85	6.0	12.0	38.8	8.2	8.2
D16120	10	29.3	31.8	26.3	21.0	16.9	15.1	33.8	27.7	13.3	23.9	2 x 20 HP	100	7.75	12.0	38.8	9.5	8.2
D16140	12	34.2	37.3	32.4	24.6	19.9	18.3	38.8	33.6	15.6	28.0	2 x 20 HP	100	9.25	12.0	38.8	10.7	8.2
D16160	14	39.1	44.0	37.0	29.1	23.5	20.7	47.4	39.6	18.4	33.1	2 x 20 HP 1 x 15 HP	130	11	18.0	57.5	11.9	8.2
<b>24' DRYERS</b>																		
D24108	6	29.3	28.2	22.4	18.6	15.0	13.7	29.5	23.2	11.8	21.2	2 x 15 HP	85	7.0	12.0	37.4	7.8	10.6
D24150	8	36.7	37.5	32.5	24.7	19.9	16.9	38.8	33.5	15.7	28.2	2 x 20 HP	100	9.25	12.0	37.4	8.5	10.6
D24180	10	44.0	42.9	35.5	28.2	22.6	20.3	45.4	37.3	18.0	32.2	2 x 25 HP	130	10.5	15.0	58.2	10.3	10.6
D24210	12	51.3	55.9	48.7	36.9	29.8	27.5	58.2	50.4	23.5	42.0	3 x 20 HP	140	13.75	18.0	58.2	11.5	10.6
D24240	14	58.7	61.7	52.4	40.5	32.6	29.0	64.8	54.5	25.9	16.4	2 x 25 HP 1 x 20 HP	165	15.0	21.0	85.9	12.7	10.6
D24260	16	66.0	74.4	64.9	49.1	39.6	36.0	77.8	67.2	31.2	55.9	4 x 20 HP	180	18.5	24.0	85.9	13.9	10.6
D24330	20	80.6	85.3	74.5	56.1	45.1	42.4	92.1	78.8	39.0	64.1	5 x 20 HP	215	20.75	30.0	115.6	16.4	10.6
D24380	24	95.3	104.1	91.3	68.4	55.1	51.1	110.1	95.9	46.7	78.3	6 x 20 HP	250	25.25	36.0	115.6	18.8	10.6
<b>32' DRYERS</b>																		
D32260	12	68.4	67.3	63.5	48.5	35.4	32.4	69.2	59.9	30.8	47.1	3 x 30 HP	205	18.0	22.5	114.6	12.3	13.1
D32340	16	88.0	89.5	79.5	64.5	47.3	39.8	92.3	80.1	41.0	64.9	4 x 30 HP	255	24.0	30.0	114.6	14.8	13.1
D32440	20	107.5	111.6	103.4	80.5	59.0	52.4	115.3	100.2	51.2	82.7	5 x 30 HP	330	30.25	37.5	170.0	17.2	13.1
D32500	24	127.1	133.9	126.9	96.5	70.8	64.8	137.8	120.3	61.3	98.6	6 x 30 HP	380	36.25	45.0	170.0	18.6	13.1

**Product Disclaimer:**

- Drying capacities represent NECO's best estimate of attainable wet bushel capacities based on a combination of actual field results and computer analysis
- Capacities will vary depending on outside temperature, humidity, initial grain temperature, crop maturity and variety, cleanliness of the grain, test weight, operating temperature, drying vs. cooling zones, etc
- Hot grain discharged from the dryer will dry an additional 1.5% - 2% when properly cooled
- Fill height listed is for a dryer with a 48" standard leg kit
- Average burner output MMBTU/hr is based on 68°C temperature rise. Ambient of 12°C and dryer operating temperature of 98°C



**NECO is an AGI Brand.**

AGI is a leading provider of equipment solutions for agriculture bulk commodities including seed, fertilizer, grain, and feed systems with a growing platform in providing equipment and solutions for food processing facilities. AGI has manufacturing facilities in Canada, the United States, the United Kingdom, Brazil, India and Italy and distributes its products globally.

# **AGI** **NECO**

9364 N. 45th St. Omaha, Nebraska, USA 68152  
**P** 1.402.453.6912 | **F** 1.402.502.1709 | [aggrowth.com/neco](http://aggrowth.com/neco)

AGGROWTH.COM    [aggrowthintl](#)        