



— BROCK SOLID[®] —

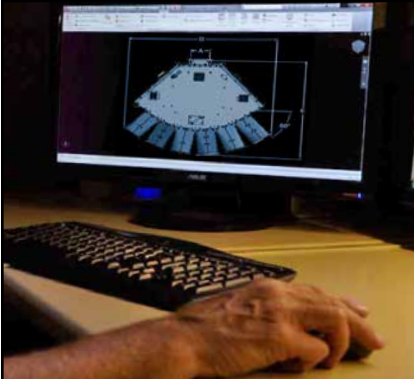
DISTRIBUTORS



Safeguarding Your Grain[®] Since 1957

Why Brock® Grain Handling Equipment:

Goes up easier



Designed to be faster to install and easier to maintain.

From our first engineering drawings, Brock® grain handling equipment has always been designed to make millwright work easier. It's about making bolt holes align the first time, using more preassembled components, and hundreds of other details that make our equipment faster to install and easier to maintain. This mindset also makes Brock grain handling equipment less expensive to build and improves the customer's experience.



Works harder



Manufactured with a culture of quality and on-time delivery.

The Brock Solid experience continues in the manufacturing plant. Every piece of our equipment is built by people who care how well it performs once it leaves the factory. When you choose Brock handling equipment, you want to put it to work as soon as possible. That's why we strive to deliver most of our standard products within four weeks.

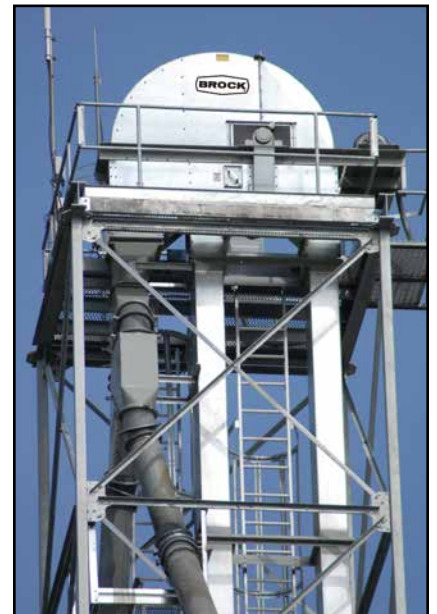


Lasts longer



Built for reliable operation and long-lasting durability.

There's a simple reason customers can count on Brock equipment to last longer. We have more than 40 years of performance to prove it. Many people who installed some of our first handling equipment are still operating it today. That's why they still come back to Brock. They know we'll always be there with replacement parts and support. Whatever it takes, the customer is top priority.



Distributors



Brock® provides a variety of distributors and accessories to help you distribute grain or other material to multi-bin handling and storage systems. From whole grains to feed to fertilizer, Brock helps you get your product where it needs to go.

Select from a wide range of standard distributor sizes and configurations. Products include flat back, 360° full round and swing distributors with 6, 8, 10 or 12 outlets and diameters from 6- to 16-inch (152- to 406-mm). Manual and electronic models are available. Our experienced team can also custom build distributors to your specifications.

Distributor Features and Options

- Angle flanged inlet and discharges included on all distributors.
- Standard discharge outlets are lined with 14-gauge mild steel. Other liner options available.
- Inverted cone design prevents material build-up.
- Large access door is engineered for easy removal and replacement of distributor components.
- Clean out doors on the back of flat back distributors deliver easy clean out and added rust prevention.
- Inner turn spout is supported on two flange bearings and is designed for easy removal and replacement.
- Built-in cushion boxes on Brock 45° distributor turn heads prevent grain damage during product distribution.
- Abrasion-resistant (AR) steel liner on Brock 60° distributors in the lower half of the inner turn spout provides extended life.
- Galvanized and stainless steel finishes available on Brock distributors.



Clean out doors provide easy clean out access as well as rust prevention maintenance.



Distributor inner turn spout seen through large access door (with door removed).



Unique inverted cone design shape of inlet prevents material and moisture from building up on the distributor bottom.

Distributor Accessories

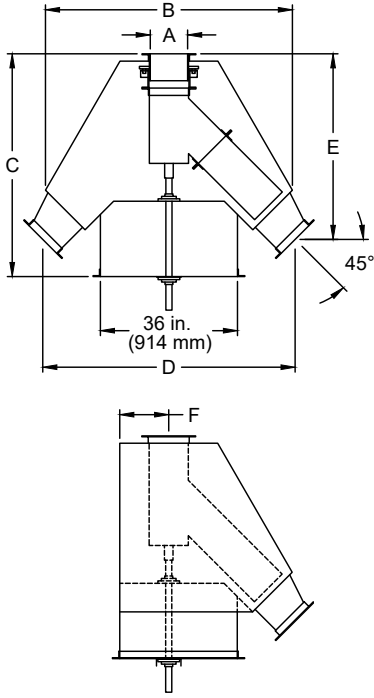
Brock distributors are available with a full range of accessories.

- Urethane or ceramic linings
- Electronic touch-screen control panel
- Distributor cable guide
- Control rod standoff bracket
- Upper cable pulley bracket
- Lower cable control with crank
- Lower floor stand control
- Hole cover plates
- Inner spout dust end seal
- Fan vent inlet with fan

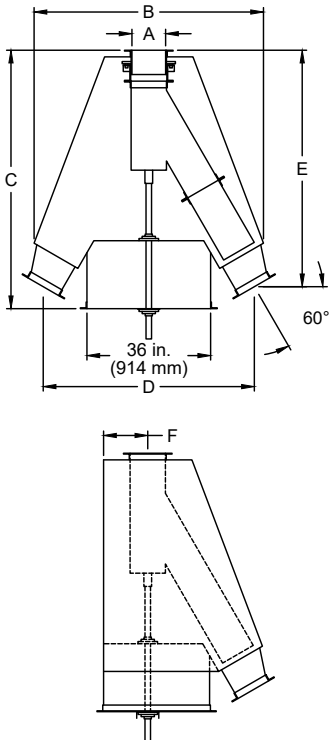


Distributor Specifications and Dimensions

**45°
FLAT BACK
DISTRIBUTOR**



**60°
FLAT BACK
DISTRIBUTOR**



INCHES 45° - FLAT BACK DISTRIBUTORS							
A	Outlets	Part #	B	C	D	E	F
6	4	FB45-0604	54	46	52.5	42.25	8
	6	FB45-0606	54	46	52.5	42.25	8
	8	FB45-0608	54	46	52.5	42.25	8
	10	FB45-0610	72	46	70.25	51.25	8
8	12	FB45-0612	72	46	70.25	51.25	8
	4	FB45-0804	54	46	54.25	41.5	8
	6	FB45-0806	54	46	54.25	41.5	8
	8	FB45-0808	54	46	54.25	41.5	8
10	10	FB45-0810	72	46	71.5	50.5	8
	12	FB45-0812	72	46	71.5	50.5	8
	4	FB45-1004	78	50.25	73	51.75	10
	6	FB45-1006	78	50.25	73	51.75	10
12	8	FB45-1008	78	50.25	73	51.75	10
	10	FB45-1010	102	60.25	97.5	64.5	10
	12	FB45-1012	102	60.25	97.5	64.5	10
	4	FB45-1204	78	50.25	75	51.75	10
14	6	FB45-1206	78	50.25	75	51.75	10
	8	FB45-1208	78	50.25	75	51.75	10
	10	FB45-1210	102	60.25	99.5	64	10
	12	FB45-1212	102	60.25	99.5	64	10
16	4	FB45-1404	66	60	60	49	12
	6	FB45-1406	78	60.5	71.5	55	13
	8	FB45-1408	98	70.5	91.5	65	13
	4	FB45-1604	66	60	61.5	48.5	12
18	6	FB45-1606	78	60.5	72.5	55	13
	8	FB45-1608	98	70.5	92	65	13
	4	FB45-1804	70	62	64	50	13
	6	FB45-1806	90	67.75	81.25	61.5	15
20	8	FB45-1808	109	62.75	101	68.25	13
	4	FB45-2004	74	65.5	67	53.75	13.5
	6	FB45-2006	90	68.5	82.75	61	15
	24	4	FB45-2404	108	70	96.25	64.5
6		FB45-2406	108	70	96.25	64.5	20

INCHES 60° - FLAT BACK DISTRIBUTORS							
A	Outlets	Part #	B	C	D	E	F
6	4	FB45-0604	56	60	50	57.5	8
	6	FB45-0606	56	60	50	57.5	8
	8	FB45-0608	56	60	50	57.5	8
	10	FB45-0610	80	60.5	74	79	8
8	12	FB45-0612	80	60.5	74	79	8
	4	FB45-0804	60	59.25	56.75	60.5	8
	6	FB45-0806	60	59.25	56.75	60.5	8
	8	FB45-0808	60	59.25	56.75	60.5	8
10	10	FB45-0810	80	60.5	75.75	78.5	8
	12	FB45-0812	80	60.5	75.75	78.5	8
	4	FB45-1004	80	81.5	70.5	80	10
	6	FB45-1006	80	81.5	70.5	80	10
12	8	FB45-1008	80	81.5	70.5	80	10
	10	FB45-1010	106	74	96	101.75	10
	12	FB45-1012	106	74	96	101.75	10
	14	4	FB45-1204	80	81.75	72.5	79.75
6		FB45-1206	80	81.75	72.5	79.75	10
8		FB45-1208	80	81.75	72.5	79.75	10
10		FB45-1210	106	74	98	101.5	10
16	12	FB45-1212	106	74	98	101.5	10

METRIC (mm) 45° - FLAT BACK DISTRIBUTORS							
A	Outlets	Part #	B	C	D	E	F
153	4	FB45-0604	1,372	1,168	1,334	1,073	203
	6	FB45-0606	1,372	1,168	1,334	1,073	203
	8	FB45-0608	1,372	1,168	1,334	1,073	203
	10	FB45-0610	1,829	1,168	1,784	1,302	203
204	12	FB45-0612	1,829	1,168	1,784	1,302	203
	4	FB45-0804	1,372	1,168	1,378	1,054	203
	6	FB45-0806	1,372	1,168	1,378	1,054	203
	8	FB45-0808	1,372	1,168	1,378	1,054	203
254	10	FB45-0810	1,829	1,168	1,816	1,283	203
	12	FB45-0812	1,829	1,168	1,816	1,283	203
	4	FB45-1004	1,981	1,276	1,854	1,314	254
	6	FB45-1006	1,981	1,276	1,854	1,314	254
305	8	FB45-1008	1,981	1,276	1,854	1,314	254
	10	FB45-1010	2,591	1,530	2,477	1,638	254
	12	FB45-1012	2,591	1,530	2,477	1,638	254
	4	FB45-1204	1,981	1,276	1,905	1,314	254
356	6	FB45-1206	1,981	1,276	1,905	1,314	254
	8	FB45-1208	1,981	1,276	1,905	1,314	254
	10	FB45-1210	2,591	1,530	2,527	1,626	254
	12	FB45-1212	2,591	1,530	2,527	1,626	254
407	4	FB45-1404	1,676	1,524	1,524	1,245	305
	6	FB45-1406	1,981	1,537	1,816	1,397	330
	8	FB45-1408	2,489	1,791	2,324	1,651	330
	4	FB45-1604	1,676	1,524	1,562	1,232	305
458	6	FB45-1606	1,981	1,537	1,842	1,397	330
	8	FB45-1608	2,489	1,791	2,337	1,651	330
	4	FB45-1804	1,778	1,575	1,626	1,270	330
	6	FB45-1806	2,286	1,721	2,064	1,562	381
508	8	FB45-1808	2,769	1,594	2,565	1,734	330
	4	FB45-2004	1,880	1,664	1,702	1,365	343
	6	FB45-2006	2,286	1,740	2,102	1,549	381
	610	4	FB45-2404	2,743	1,778	2,445	1,638
6		FB45-2406	2,743	1,778	2,445	1,638	508

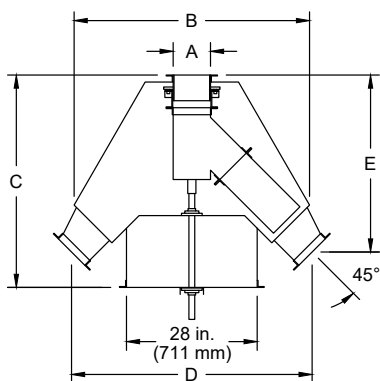
METRIC (mm) 60° - FLAT BACK DISTRIBUTORS							
A	Outlets	Part #	B	C	D	E	F
153	4	FB45-0604	1,422	1,524	1,270	1,461	203
	6	FB45-0606	1,422	1,524	1,270	1,461	203
	8	FB45-0608	1,422	1,524	1,270	1,461	203
	10	FB45-0610	2,032	1,537	1,880	2,007	203
204	12	FB45-0612	2,032	1,537	1,880	2,007	203
	4	FB45-0804	1,524	1,505	1,441	1,537	203
	6	FB45-0806	1,524	1,505	1,441	1,537	203
	8	FB45-0808	1,524	1,505	1,441	1,537	203
254	10	FB45-0810	2,032	1,537	1,924	1,994	203
	12	FB45-0812	2,032	1,537	1,924	1,994	203
	4	FB45-1004	2,032	2,070	1,791	2,032	254
	6	FB45-1006	2,032	2,070	1,791	2,032	254
305	8	FB45-1008	2,032	2,070	1,791	2,032	254
	10	FB45-1010	2,692	1,880	2,438	2,584	254
	12	FB45-1012	2,692	1,880	2,438	2,584	254
	4	FB45-1204	2,032	2,076	1,842	2,026	254
356	6	FB45-1206	2,032	2,076	1,842	2,026	254
	8	FB45-1208	2,032	2,076	1,842	2,026	254
	10	FB45-1210	2,692	1,880	2,489	2,578	254
	12	FB45-1212	2,692	1,880	2,489	2,578	254



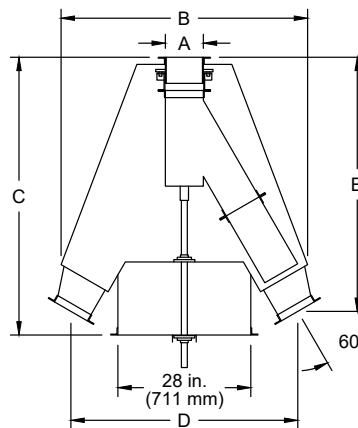
INCHES 45° - FULL ROUND DISTRIBUTORS						
A	Outlets	Part #	B	C	D	E
6	6	RD45-0606	48	46	47	39.5
	8	RD45-0608	48	46	47	39.5
	10	RD45-0610	54	50	52.75	42.25
	12	RD45-0612	54	50	52.75	42.25
8	6	RD45-0806	48	46	48.5	38.75
	8	RD45-0808	48	46	48.5	38.75
	10	RD45-0810	54	50	54	41.5
	12	RD45-0812	54	50	54	41.5
10	6	RD45-1006	60	51.75	56	44.25
	8	RD45-1008	60	51.75	56	44.25
	10	RD45-1010	78	58.5	74	53
	12	RD45-1012	78	58.5	74	53
12	6	RD45-1206	60	51.75	57.75	43.5
	8	RD45-1208	60	51.75	57.75	43.5
	10	RD45-1210	78	58.5	75.75	52.5
	12	RD45-1212	78	58.5	75.75	52.5
14	6	RD45-1406	66	61	61	50.5
	8	RD45-1408	66	61	61	50.5
16	6	RD45-1606	66	61	62.5	49.75
	8	RD45-1608	66	61	62.5	49.75

METRIC (mm) 45° - FULL ROUND DISTRIBUTORS						
A	Outlets	Part #	B	C	D	E
153	6	RD45-0606	1,219	1,168	1,194	1,003
	8	RD45-0608	1,219	1,168	1,194	1,003
	10	RD45-0610	1,372	1,270	1,340	1,073
	12	RD45-0612	1,372	1,270	1,340	1,073
204	6	RD45-0806	1,219	1,168	1,232	984
	8	RD45-0808	1,219	1,168	1,232	984
	10	RD45-0810	1,372	1,270	1,372	1,054
	12	RD45-0812	1,372	1,270	1,372	1,054
254	6	RD45-1006	1,524	1,314	1,422	1,124
	8	RD45-1008	1,524	1,314	1,422	1,124
	10	RD45-1010	1,981	1,486	1,880	1,346
	12	RD45-1012	1,981	1,486	1,880	1,346
305	6	RD45-1206	1,524	1,314	1,467	1,105
	8	RD45-1208	1,524	1,314	1,467	1,105
	10	RD45-1210	1,981	1,486	1,924	1,334
	12	RD45-1212	1,981	1,486	1,924	1,334
356	6	RD45-1406	1,676	1,549	1,549	1,283
	8	RD45-1408	1,676	1,549	1,549	1,283
407	6	RD45-1606	1,676	1,549	1,588	1,264
	8	RD45-1608	1,676	1,549	1,588	1,264

45° FULL ROUND DISTRIBUTOR



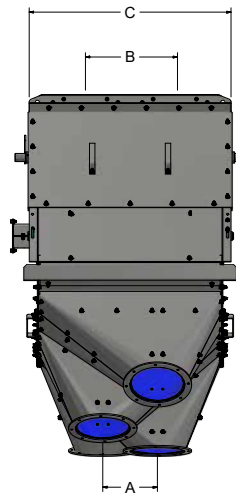
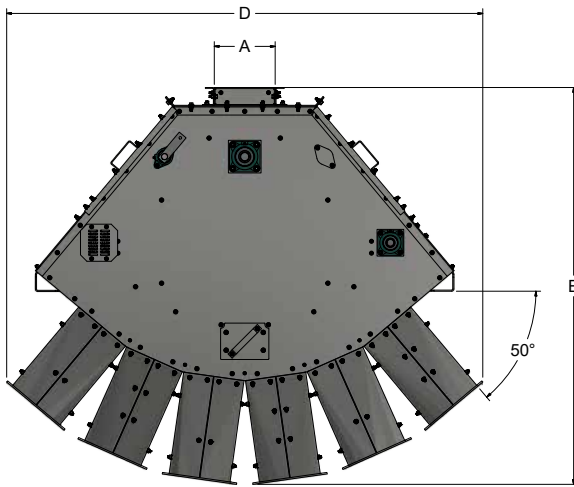
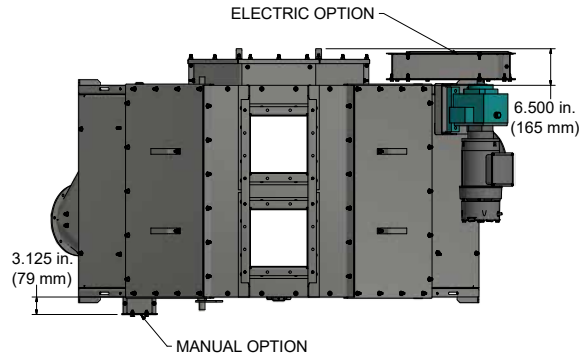
60° FULL ROUND DISTRIBUTOR



INCHES 60° - FULL ROUND DISTRIBUTORS						
A	Outlets	Part #	B	C	D	E
6	6	RD60-0606	48	59	42	51
	8	RD60-0608	48	59	42	51
	10	RD60-0610	60	65.75	54	61.5
	12	RD60-0612	60	65.75	54	61.5
8	6	RD60-0806	48	59	43.5	50.5
	8	RD60-0808	48	59	43.5	50.5
	10	RD60-0810	60	65.75	55.5	61
	12	RD60-0812	60	65.75	55.5	61
10	6	RD60-1006	60	66.75	50.75	62.5
	8	RD60-1008	60	66.75	50.75	62.5
	10	RD60-1010	80	79.75	70.5	79.75
	12	RD60-1012	80	79.75	70.5	79.75
12	6	RD60-1206	60	66.75	53	62.5
	8	RD60-1208	60	66.75	53	62.5
	10	RD60-1210	80	80	72.75	79.75
	12	RD60-1212	80	80	72.75	79.75

METRIC (mm) 60° - FULL ROUND DISTRIBUTORS						
A	Outlets	Part #	B	C	D	E
153	6	RD60-0606	1,219	1,499	1,067	1,295
	8	RD60-0608	1,219	1,499	1,067	1,295
	10	RD60-0610	1,524	1,670	1,372	1,562
	12	RD60-0612	1,524	1,670	1,372	1,562
204	6	RD60-0806	1,219	1,499	1,105	1,283
	8	RD60-0808	1,219	1,499	1,105	1,283
	10	RD60-0810	1,524	1,670	1,410	1,549
	12	RD60-0812	1,524	1,670	1,410	1,549
254	6	RD60-1006	1,524	1,695	1,289	1,588
	8	RD60-1008	1,524	1,695	1,289	1,588
	10	RD60-1010	2,032	2,026	1,791	2,026
	12	RD60-1012	2,032	2,026	1,791	2,026
305	6	RD60-1206	1,524	1,695	1,346	1,588
	8	RD60-1208	1,524	1,695	1,346	1,588
	10	RD60-1210	2,032	2,032	1,848	2,026
	12	RD60-1212	2,032	2,032	1,848	2,026

Easy Swing Distributors



Features and Options

- Square flanged inlet with abrasion-resistant (AR) steel liner.
- Round or square flanged discharge outlets.
- Swing spouts and outlets lined with 1/4-inch (6.4-mm) urethane liner.
- 10-gauge galvanized construction.
- Removable end panels allow access from either end.
- Swing spouts are supported on bearings.
- 50° maximum flow angle.
- Spouts are driven with a positive roller chain drive powered by a C-face gear reducer with brake.
- Limit switches are housed in a dust tight enclosure located on the outside of the distributor for ease of maintenance.

INCHES		SINGLE SWING			DUAL SWING			
A	Outlets	C	D	E	B	C	D	E
10	4	21	61	52	16.5	38	61	52
	6	21	84	63	16.5	38	84	63
	8	21	103	82	16.5	38	103	82
	10	21	122	97	16.5	38	122	97
12	4	23	71	59	18.5	42	71	59
	6	23	94	77	18.5	42	94	77
	8	23	117	95	18.5	42	117	95
	10	23	139	113	18.5	42	139	113
14	4	25	81	65	20.5	46	81	65
	6	25	108	87	20.5	46	108	87
	8	25	134	108	20.5	46	134	108
	10	25	161	129	20.5	46	161	129
16	4	27	88	74	22.5	50	88	74
	6	27	118	97	22.5	50	118	97
	8	27	151	121	22.5	50	151	121
	10	27	182	145	22.5	50	182	145
18	4	29	99	81	24.5	54	99	81
	6	29	134	109	24.5	54	134	109
	8	29	168	134	24.5	54	168	134
20	4	31	109	88	26.5	58	109	88
	6	31	148	118	26.5	58	148	118
	8	31	185	147	26.5	58	185	147

METRIC (mm)		SINGLE SWING			DUAL SWING			
A	Outlets	C	D	E	B	C	D	E
254	4	533	1,549	1,321	419	965	1,549	1,321
	6	533	2,134	1,600	419	965	2,134	1,600
	8	533	2,616	2,083	419	965	2,616	2,083
	10	533	3,099	2,464	419	965	3,099	2,464
305	4	584	1,803	1,499	470	1,067	1,803	1,499
	6	584	2,388	1,956	470	1,067	2,388	1,956
	8	584	2,972	2,413	470	1,067	2,972	2,413
	10	584	3,531	2,870	470	1,067	3,531	2,870
356	4	635	2,057	1,651	521	1,168	2,057	1,651
	6	635	2,743	2,210	521	1,168	2,743	2,210
	8	635	3,404	2,743	521	1,168	3,404	2,743
	10	635	4,089	3,277	521	1,168	4,089	3,277
407	4	686	2,235	1,880	572	1,270	2,235	1,880
	6	686	2,997	2,464	572	1,270	2,997	2,464
	8	686	3,835	3,073	572	1,270	3,835	3,073
	10	686	4,623	3,683	572	1,270	4,623	3,683
458	4	737	2,515	2,057	622	1,372	2,515	2,057
	6	737	3,404	2,769	622	1,372	3,404	2,769
	8	737	4,267	3,404	622	1,372	4,267	3,404
508	4	787	2,769	2,235	673	1,473	2,769	2,235
	6	787	3,759	2,997	673	1,473	3,759	2,997
	8	787	4,699	3,734	673	1,473	4,699	3,734

Distributor Controls



Brock® distributors are available with manual control using pipe or cable, and with electronic control using an easy-to-use touch-screen interface.

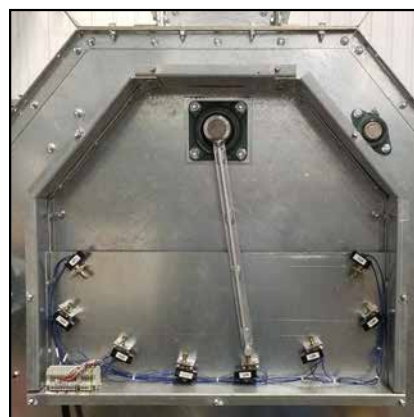
The Brock touch-screen panel allows for manual or automatic control of one or two distributors. You're never locked in with Brock distributors. Even if you start with manual control, you have the option to upgrade to electronic control at any time using the Brock control kit.



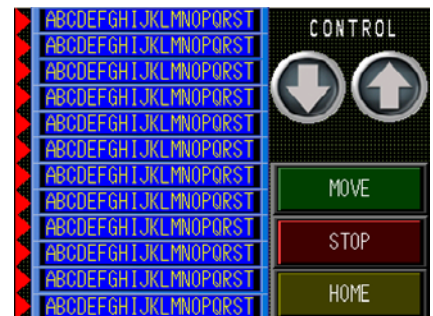
Control Features and Options

- Alarm screen for troubleshooting.
- Each outlet can be given a user defined name up to 20 characters long.
- Each outlet position is controlled by its own limit switch.
- AC drive controls the brake-motor to ensure distributor spout stays in place.
- Variable frequency drive allows for gradual stops to reduce wear on the turn spout and shaft.
- Over travel switches eliminate the possibility of a crash.
- Controller has Ethernet port for connecting to other automation systems.
- Requires only 120 VAC, single-phase power. Can be used on 50 or 60Hz.

- Manual pipe control includes the bottom floor stand, upper cable pulley bracket and foot pedal, less pipe and cable.
- Manual cable control includes upper cable pulley bracket, bottom control crank and foot pedal, less cable.

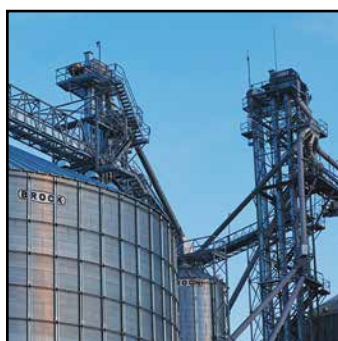


Electric Swing Distributor (with cover removed)



Electric control includes a 5.7-inch (145-mm) touch-screen panel and a positive, TEFC gear motor drive and switches in lower control tub. For Class II Group G requirements, consult the Brock engineering department.

A Full Line of Brock Solid® Solutions



Storage

- Stiffened & Non-stiffened Grain Bins
- Stiffened & Non-stiffened Hopper Bins
- Temporary Storage
- Bin Access Doors
- Grain Aeration Floors

Handling

- Grain Sweeps
- Grain Conveyors
- Bin Unloading Systems
- Bucket Elevators
- Distributors & Accessories

Conditioning

- Low-Profile Grain Dryers
- Tower Grain Dryers
- Centrifugal & Axial Fans
- Heaters
- Controls

Structures

- Catwalks
- Bucket Elevator Towers & Stairways
- EVERLOC® Roof Mount System
- Support Towers
- Slot & Tab Construction

Brock Solid® is our guarantee of trusted reliability you can count on day in and day out. It is the guarantee of unmistakable quality, built to last year after year. It is the same guarantee we founded the company on back in 1957. That focus on providing dependability has resulted in the full line

of grain facility solutions that are available today. You will find the quality you have come to expect and the trusted integrity you deserve. Brock Solid delivers. Always has, always will.



— BROCK SOLID® —

Safeguarding Your Grain® Since 1957

BROCK GRAIN SYSTEMS

A Division of CTB, Inc.
A Berkshire Hathaway Company
Phone: +1 866.658.4191
www.brockgrain.com
Email: sales@brockgrain.com